

MANDATORY DISCLOSURE 2024-2025



Submitted by

Udaya School of Engineering

Udaya Nagar, Vellamadi, Ammandivilai Post,
Kanyakumari Dist, Tamil Nadu– 629 204

Contents

Sl.No	Particulars
I	Name of the Institution
II	Name & Address of the Director
III	Name of the Affiliating University
IV	Governance:
	* Governing Body
	* Academic Advisory Body
	* Details of body meetings
V	* Organizational Chart
	* Name of the programmes approved by AICTE
	* Name of the Programmes accredited by AICTE
VI	* Details of Programmes
	Faculty:
	* Branch Wise faculty members
VII	* Number of faculty employed and left during the last three years
	* Profile of principal and faculties
VIII	* Details of fee as approved by state fee committee
	* Scholarship details
	* Hostel fee details
IX	Admission:
	* No of seats sanctioned
	* No of students admitted
	* No of applications received during last two years for admission
X	Admission procedure
XI	Criteria and Weightages for Admission
XII	Results of admission under Management seats / Vacant Seats
XIII	Information on Infrastructure and other Resources available
	* Library

MANDATORY DISCLOSURE

I. Name of the Institution : **UDAYA SCHOOL OF ENGINEERING**
UDAYA NAGAR, VELLAMADI,
AMMANDIVILAI POST – 629204,
KANYAKUMARI DISTRICT.

Telephone Number : 04651-239900, 239901

Fax Number : 04651-239903

E-mail : 978udayaengineering@gmail.com

**II. Name and address of
the Principal** : **Dr.S.Jothibas****u, M.Tech. M.B.A, Ph.D**
Udaya School of Engineering,
Udaya Nagar, Vellamadi,
Ammandivilai Post – 629204,
Kanyakumari District.

Telephone Number : 04651-239900, 239901

Fax Number : 04651-239903

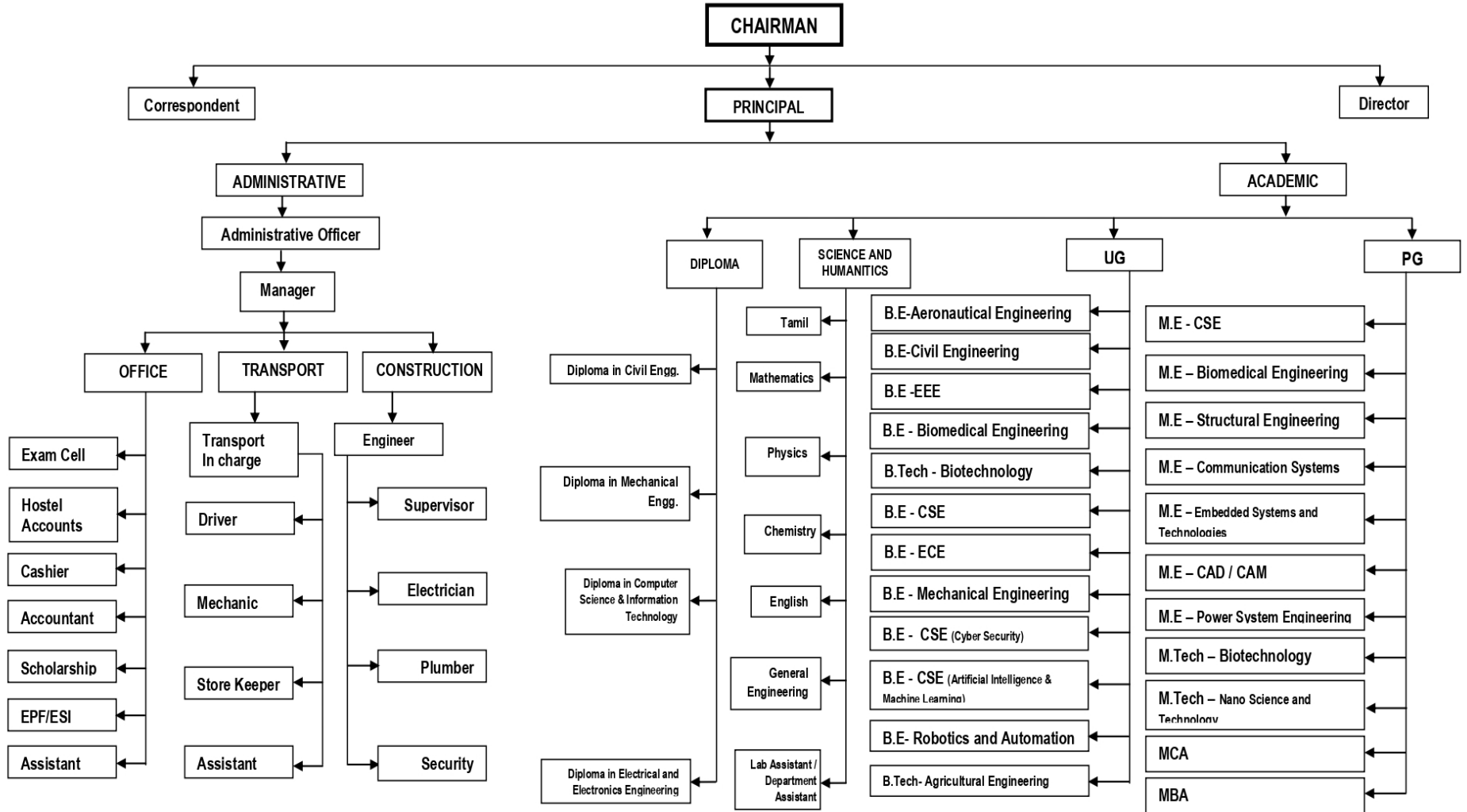
E-mail : udayajbonline@gmail.com

**III. Name of the Affiliating
University** : **Anna University, Chennai**

UDAYA SCHOOL OF ENGINEERING

Udaya Nagar, Vellamadi Junction
Ammandivilai, Kanyakumari District – 629204

ORGANIZATIONAL CHART



IV. GOVERNANCE:

Sl.No	Name	Designation	Phone Number	Email ID
1.	Er.C.Thayaparan	Chairman	9443358902	udayachairman@gmail.com
2.	Dr. A. C. T. Arjun Singh	Member	8903603699	arjunsinghthayaparan@gmail.com
3.	Ms.A.C.T.Udaya	Member	7708282172	978udayaengineering@gmail.com

V. PROGRAMMES

- Name of the Programmes approved by the AICTE

Sl.No	Name of the Programmes approved by AICTE	Number of Seats	Duration
1.	B.E - Bio-Medical Engineering	60	4-years
2.	B.Tech - Bio-Technology	60	4-years
3.	B.E - Electrical and Electronics Engineering	60	4-years
4.	B.E - Electronics and Communication Engineering	30	4-years
5.	B.E - Computer Science and Engineering	60	4-years
6.	B.E - Computer Science and Engineering (Artificial Intelligence and Machine Learning)	60	4-years
7.	B.E - Computer Science and Engineering (Cyber Security)	60	4-years
8.	B.E – Robotics and Automation	30	4-years
9.	B.E - Mechanical Engineering	90	4-years
10.	B.E- Civil Engineering	60	4-years
11.	B.E- Aeronautical Engineering	30	4-years
12.	B.Tech – Agricultural Engineering	60	4-years
13.	M.E - Embedded Systems	18	2-years
14.	M.E – CAD / CAM	18	2-years
15.	M.E – Computer Science and Engineering	18	2-years
16.	M.E – Biomedical Engineering	24	2-years
17.	M.E – Power Systems Engineering	18	2-years
18.	M.E – Communications Engineering	12	2-years
19.	M.E – Structural Engineering	24	2-years
20.	M.Tech – Biotechnology	18	2-years
21.	M.Tech – Nano Science and Technology	12	2-years
22.	Master of Computer Applications	120	2-years
23.	Master of Business Administration	120	2-years

24.	Diploma in Civil Engineering	60	3 – Years
25.	Diploma in Mechanical Engineering	60	3 – Years
26.	Diploma in Computer Science and Information Technology	60	3 – Years
27.	Diploma in Electrical and Electronics Engineering	60	3 – Years

- **Name of the Programmes accredited by the AICTE**

Not Applicable

- **Cut off mark / Rank for Admission during the last three years**

Year: 2023-2014:

S.No	Course	Max cut off (200)	Min cut off
1	B.E - Bio-Medical Engineering	183.00	101.00
2	B.Tech - Bio-Technology	165.00	89.00
3	B.E - Electrical and Electronics Engineering	150.00	100.00
4	B.E - Electronics and Communication Engineering	120.00	85.00
5	B.E - Computer science and Engineering	190.00	125.00
6	B.E - Mechanical Engineering	175.00	92.00
7	B.E- Civil Engineering	150.00	93.00
8	B.E- Aeronautical Engineering	145.00	120.00
9	B.Tech –Agricultural Engineering	141.00	110.00
10	B.E - Computer science and Engineering (Artificial Intelligence and Machine Learning)	152.00	120.00
11	B.E - Computer science and Engineering (Cyber Security)	147.00	115.00
12	B.E – Robotics and Automation	146.00	118.00

Year: 2022-2023

S.No	Course	Max cut off (200)	Min cut off
1	B.E - Bio-Medical Engineering	180.50	120.00
2	B.Tech - Bio-Technology	185.50	115.00

3	B.E - Electrical and Electronics Engineering	150.50	100.00
4	B.E - Electronics and Communication Engineering	120.50	85.25
5	B.E - Computer science and Engineering	195.60	105.50
6	B.E - Mechanical Engineering	175.50	92.00
7	B.E- Civil Engineering	150.00	93.00
8	B.E- Aeronautical Engineering	145.00	120.00
9	B.Tech –Agricultural Engineering	140.00	110.00
10	B.E - Computer science and Engineering (Artificial Intelligence and Machine Learning)	150.00	120.00
11	B.E - Computer science and Engineering (Cyber Security)	145.00	115.00
12	B.E – Robotics and Automation	147.00	118.00

Year: 2021-2022

S.No	Course	Max cut off (200)	Min cut off
1	B.E - Bio-Medical Engineering	180.50	90.00
2	B.Tech - Bio-Technology	185.50	115.00
3	B.E - Electrical and Electronics Engineering	150.50	100.00
4	B.E - Electronics and Communication Engineering	120.50	85.25
5	B.E - Computer science and Engineering	195.60	105.50
6	B.E - Mechanical Engineering	175.50	92.00
7	B.E- Civil Engineering	150.00	93.00
8	B.E- Aeronautical Engineering	145.00	120.00

*As applicable by Tamilnadu Government

Campus placement in last 3 years

S.No.	Year	Name of the Company/Industry	Number of Students Placed
1	2021	Drona Solutions	18
		PEOPLE TALENT	12
		SAI SOFTWARE SOLUTIONS	10

		HCL	13
		TEXMO INDUSTRIES Pvt LTD	32
		HDFC	21
		SLASH SUPPORT	18
		PROBE	15
2	2022	Elim Mediatech Pvt Ltd	18
		Thoppil Constructors India Pvt.Ltd	22
		Maathangi Info Research Solutions Private	31
		Thai Plastic Private Limited	19
		Sea Sense Technologies	35
		Cogent E-Service Limited	26
		EDUREKA	30
		Resbee Info Technologies Pvt.Ltd	35
		Nubizuez Private Limited	32
		NIMS Health Care	40
3	2023	Elim Mediatech Pvt Ltd	19
		Thoppil Constructors India Pvt.Ltd	21
		Maathangi Info Research Solutions Private	30
		Thai Plastic Private Limited	20
		Sea Sense Technologies	32
		Cogent E-Service Limited	28
		EDUREKA	20
		Feather Software	43
		Resbee Info Technologies Pvt.Ltd	25
		Nubizuez Private Limited	30
NIMS Health Care	30		

- **Collaboration with Foreign University**

Nil

Course wise number of students admitted in the previous year

S.No	Course(s)	AICTE Approved Intake for 2023-2024	Actual number of students admitted for 2023-2024	Lateral Entry Admission 2023-2024	Total Admission 2023-2024
1	B.E - Biomedical Engineering	60	38	5	43
2	B.Tech - Biotechnology	60	24	0	24
3	B.E - Electrical and Electronics Engineering	60	12	32	44

4	B.E - Electronics and Communication Engineering	30	7	8	15
5	B.E - Computer Science and Engineering	60	48	10	58
6	B.E - Mechanical Engineering	90	20	73	93
7	B.E- Civil Engineering	60	7	58	65
8	B.E- Aeronautical Engineering	30	4	3	7
9	B.E – Artificial Intelligence & Machine Learning)	30	14	0	14
10	B.E – Cyber Security	60	5	0	5
11	B.E – Robotics and Automation	30	1	2	3
12	B.Tech – Agricultural Engineering	60	10	5	15
13	M.E - Embedded Systems	18	7	-	7
14	M.E – CAD / CAM	18	8	-	8
15	M.E – Computer Science and Engineering	18	11	-	11
16	M.E – Biomedical Engineering	24	9	-	9
17	M.E – Power Systems Engineering	18	8	-	8
18	M.Tech – Biotechnology	18	13	-	13
19	M.Tech – Nano Science and Technology	12	1	-	1
20	M.E – Communication Engineering	12	2	-	2
21	M.E – Structural Engineering	24	24	-	24
22	MCA - Master of Computer Applications	120	49	-	49
23	MBA - Master of Business Administration	120	116	-	116
24	Diploma in Civil Engineering	60	9	-	9
25	Diploma in Mechanical Engineering	60	13	-	13
26	Diploma in Computer Science and Information Technology	60	11	-	11
27	Diploma in Electrical and Electronics Engineering	60	5	-	5

Branch wise List of Faculty Members:

S.No	Department	Total number of faculty
1	B.E - Biomedical Engineering	9
2	B.Tech - Biotechnology	9
3	B.E - Electrical and Electronics Engineering	9
4	B.E - Electronics and Communication Engineering	6
5	B.E - Computer Science and Engineering	9
6	B.E - Mechanical Engineering	15
7	B.E- Civil Engineering	9
8	B.E- Aeronautical Engineering	6
9	B.E – Artificial Intelligence & Machine Learning)	6
10	B.E – Cyber Security	6
11	B.E – Robotics and Automation	3
12	B.Tech – Agricultural Engineering	6
13	M.E - Embedded Systems	3
14	M.E – CAD / CAM	3
15	M.E – Computer Science and Engineering	3
16	M.E – Biomedical Engineering	4
17	M.E – Power Systems Engineering	3
18	M.Tech – Biotechnology	3
19	M.Tech – Nano Science and Technology	3
20	M.E – Communication Engineering	3
21	M.E – Structural Engineering	4
22	MCA - Master of Computer Applications	10
23	MBA - Master of Business Administration	10
24	Humanities & Social Sciences (Including Physical Director and Librarian)	36
25	Diploma in Civil Engineering	4
26	Diploma in Mechanical Engineering	4

27	Diploma in Computer Science and Information Technology	4
28	Diploma in Electrical and Electronics Engineering	4

*** Number of Faculty employed and left during the last three years**

Sl.No	Number of faculty Employed	Left during last three years
1.	194	33

VIII. FEE:

Details of Fee Approved by State Committee	UG: Through counseling	Rs. 50000/-
	Through management quota	Rs. 50000/-
	PG: Through counseling	Rs. 35000/-
	Through management quota	Rs. 50000/-
Boarding and Lodging Fee	Admission- Mess Charges Electricity Charges Room Rent	Rs. 4000/- Rs. 25000/- Rs. 6000/- Rs.15000/-
	Total	Rs. 50000/-

*** Scholarship Details**

Year	No of Student	Categories					Amount
		Minority	MBC	BC	First Graduate BC	SC/ST	
2003-2004	18	-	1	10	7	-	46,810.00
2004-2005	38	-	1	22	15	-	96,615.00
2005-2006	70	-	3	41	26	-	1,82,835.00

2006-2007	70	-	3	35	32	-	2,19,040.00
2007-2008	109	-	3	53	53	-	3,54,210.00
2008-2009	252	14	8	106	103	21	12,57,310.00
2009-2010	378	33	11	164	153	17	24,67,183.00
2010-2011	336	41	11	151	117	16	25,28,974.00
2011-2012	388	3	30	206	135	14	17,84,164.00
2012-2013	578	20	45	328	160	25	3529371.00
2013-2014	586	33	45	262	211	35	4891540.00
2014-2015	522	52	37	185	215	33	5013825.00
2015-2016	378	27	26	137	163	25	3353440.00
2016-2017	314	9	24	74	145	62	5460495.00
2017-2018	461	13	16	152	141	136	12630410.00
2018-2019	391	6	7	99	23	256	19387550.00
2019-2020	427	21	1	97	21	287	21172300.00
2020-2021	518	0	0	111	48	359	23696917.00
2021-2022	768	5	10	118	166	469	32472416.00

IX. ADMISSION

- Number of Seats sanctioned with the year of approval

Sl.No	Year	Branch	No of Seats Sanctioned
1.	2002-2003	B.E – Electronics and Communication Engineering	60
		B.E – Instrumentation and Control Engineering	60
		B.Tech – Industrial Biotechnology	60
2.	2003-2004	B.E – Electronics and Communication Engineering	60
		B.E – Instrumentation and Control Engineering	60
		B.Tech – Industrial Biotechnology	60
3.	2004-2005	B.E – Electronics and Communication Engineering	60
		B.E – Instrumentation and Control Engineering	60
		B.Tech – Industrial Biotechnology	60
4.	2005-2006	B.E – Electronics and Communication Engineering	60
		B.E – Instrumentation and Control Engineering	60
		B.Tech – Industrial Biotechnology	60
		B.E – Electrical and Electronics Engineering	60
		B.E – Biomedical Engineering	60
		B.E – Mechanical Engineering	60
MCA – Master of Computer Applications	60		
5	2006-2007	B.E – Electronics and Communication Engineering	120
		B.E – Computer Science and Engineering	60
		B.Tech – Biotechnology	60
		B.E – Electrical and Electronics Engineering	60
		B.E – Biomedical Engineering	60
		B.E – Mechanical Engineering	60
		MCA – Master of Computer Applications	60
		MBA – Master of Business Administration	60
6	2007-2008	B.E – Electronics and Communication Engineering	120
		B.E – Computer Science and Engineering	60
		B.Tech – Biotechnology	60
		B.E – Electrical and Electronics Engineering	60
		B.E – Biomedical Engineering	60
		B.E – Mechanical Engineering	60
		MCA – Master of Computer Applications	60
		MBA – Master of Business Administration	60

7	2008-2009	B.E – Electronics and Communication Engineering	120
		B.E – Computer Science and Engineering	60
		B.Tech – Biotechnology	60
		B.E – Electrical and Electronics Engineering	60
		B.E – Biomedical Engineering	60
		B.E – Mechanical Engineering	60
		M.E – Embedded Systems	18
		M.Tech – Biotechnology	18
		MCA – Master of Computer Applications	60
		MBA – Master of Business Administration	60
8	2009-2010	B.E – Electronics and Communication Engineering	120
		B.E – Computer Science and Engineering	60
		B.Tech – Biotechnology	60
		B.E – Electrical and Electronics Engineering	60
		B.E – Biomedical Engineering	60
		B.E – Mechanical Engineering	60
		M.E – Embedded Systems	18
		M.Tech – Biotechnology	18
		MCA – Master of Computer Applications	60
		MBA – Master of Business Administration	60
9.	2010-2011	B.E – Electronics and Communication Engineering	120
		B.E – Computer Science and Engineering	60
		B.Tech – Biotechnology	60
		B.E – Electrical and Electronics Engineering	60
		B.E – Biomedical Engineering	60
		B.E – Mechanical Engineering	60
		M.E – Embedded Systems	18
		M.Tech – Biotechnology	18
		MCA – Master of Computer Applications	60
		MBA – Master of Business Administration	60
10.	2011-2012	B.E – Bio-Medical Engineering	60
		B.Tech – Bio-Technology	60
		B.E – Electrical and Electronics Engineering	60
		B.E – Electronics and Communication Engineering	120
		B.E – Computer science and Engineering	60
		B.E – Mechanical Engineering	120
		B.E- Civil Engineering	60
		M.E – Embedded Systems	18
		M.E – CAD / CAM	18
		M.E – Computer Science and Engineering	18
		M.E – Biomedical Engineering	18
		M.Tech – Biotechnology	18
		M.Tech – Nano Science and Technology	18
MCA – Master of Computer Applications	60		

		MBA – Master of Business Administration	60
11.	2012-2013	B.E – Biomedical Engineering	60
		B.Tech – Bio-Technology	60
		B.E – Electrical and Electronics Engineering	60
		B.E – Electronics and Communication Engineering	120
		B.E – Computer science and Engineering	60
		B.E – Mechanical Engineering	120
		B.E- Civil Engineering	60
		B.E- Aeronautical Engineering	60
		M.E – Embedded Systems	18
		M.E – CAD / CAM	18
		M.E – Computer Science and Engineering	18
		M.E – Biomedical Engineering	18
		M.E – Power Systems Engineering	18
		M.Tech – Biotechnology	18
		M.Tech – Nano Science and Technology	18
		MCA – Master of Computer Applications	60
		MBA – Master of Business Administration	60
12.	2013-2014	B.E – Biomedical Engineering	60
		B.Tech – Bio-Technology	60
		B.E – Electrical and Electronics Engineering	60
		B.E – Electronics and Communication Engineering	120
		B.E – Computer science and Engineering	60
		B.E – Mechanical Engineering	120
		B.E- Civil Engineering	60
		B.E- Aeronautical Engineering	60
		M.E – Embedded Systems	18
		M.E – CAD / CAM	18
		M.E – Computer Science and Engineering	18
		M.E – Biomedical Engineering	18
		M.E – Power Systems Engineering	18
		M.Tech – Biotechnology	18
		M.Tech – Nano Science and Technology	18
		MCA – Master of Computer Applications	60
		MBA – Master of Business Administration	60
13.	2014-2015	B.E – Biomedical Engineering	60
		B.Tech – Bio-Technology	60
		B.E – Electrical and Electronics Engineering	60
		B.E – Electronics and Communication Engineering	120
		B.E – Computer science and Engineering	60
		B.E – Mechanical Engineering	180
		B.E- Civil Engineering	120
		B.E- Aeronautical Engineering	60
		M.E – Embedded Systems	18

		M.E – CAD / CAM	18
		M.E – Computer Science and Engineering	18
		M.E – Biomedical Engineering	18
		M.E – Power Systems Engineering	18
		M.E – Communications Engineering	18
		M.E – Structural Engineering	18
		M.Tech – Biotechnology	18
		M.Tech – Nano Science and Technology	18
		MCA – Master of Computer Applications	60
		MBA – Master of Business Administration	60
13.	2015-2016	B.E – Biomedical Engineering	60
		B.Tech – Bio-Technology	60
		B.E – Electrical and Electronics Engineering	60
		B.E – Electronics and Communication Engineering	120
		B.E – Computer science and Engineering	60
		B.E – Mechanical Engineering	180
		B.E- Civil Engineering	120
		B.E- Aeronautical Engineering	60
		M.E – Embedded Systems	18
		M.E – CAD / CAM	18
		M.E – Computer Science and Engineering	18
		M.E – Biomedical Engineering	18
		M.E – Power Systems Engineering	18
		M.E – Communications Engineering	18
		M.E – Structural Engineering	18
		M.Tech – Biotechnology	18
		M.Tech – Nano Science and Technology	18
		MCA – Master of Computer Applications	60
		MBA – Master of Business Administration	60
		13.	2016-2017
B.Tech – Bio-Technology	60		
B.E – Electrical and Electronics Engineering	60		
B.E – Electronics and Communication Engineering	120		
B.E – Computer science and Engineering	60		
B.E – Mechanical Engineering	180		
B.E- Civil Engineering	120		
B.E- Aeronautical Engineering	60		
M.E – Embedded Systems	18		
M.E – CAD / CAM	18		
M.E – Computer Science and Engineering	18		
M.E – Biomedical Engineering	18		
M.E – Power Systems Engineering	18		
M.E – Communications Engineering	18		
M.E – Structural Engineering	18		

		M.Tech – Biotechnology	18
		M.Tech – Nano Science and Technology	18
		MCA – Master of Computer Applications	60
		MBA – Master of Business Administration	60
13.	2017-2018	B.E – Biomedical Engineering	60
		B.Tech – Bio-Technology	60
		B.E – Electrical and Electronics Engineering	60
		B.E – Electronics and Communication Engineering	120
		B.E – Computer science and Engineering	60
		B.E – Mechanical Engineering	180
		B.E- Civil Engineering	120
		B.E- Aeronautical Engineering	60
		M.E – Embedded Systems	18
		M.E – CAD / CAM	18
		M.E – Computer Science and Engineering	18
		M.E – Biomedical Engineering	18
		M.E – Power Systems Engineering	18
		M.E – Communications Engineering	18
		M.E – Structural Engineering	18
		M.Tech – Biotechnology	18
		M.Tech – Nano Science and Technology	18
		MCA – Master of Computer Applications	60
MBA – Master of Business Administration	60		
14.	2018-2019	B.E – Biomedical Engineering	60
		B.Tech – Bio-Technology	60
		B.E – Electrical and Electronics Engineering	60
		B.E – Electronics and Communication Engineering	120
		B.E – Computer science and Engineering	60
		B.E – Mechanical Engineering	180
		B.E- Civil Engineering	120
		B.E- Aeronautical Engineering	60
		M.E – Embedded Systems	18
		M.E – CAD / CAM	18
		M.E – Computer Science and Engineering	18
		M.E – Biomedical Engineering	18
		M.E – Power Systems Engineering	18
		M.E – Communications Engineering	18
		M.E – Structural Engineering	18
		M.Tech – Biotechnology	18
		M.Tech – Nano Science and Technology	18
		MCA – Master of Computer Applications	60
MBA – Master of Business Administration	60		
15.	2019-2020	B.E – Biomedical Engineering	60
		B.Tech – Bio-Technology	60

		B.E – Electrical and Electronics Engineering	30
		B.E – Electronics and Communication Engineering	60
		B.E – Computer science and Engineering	60
		B.E – Mechanical Engineering	180
		B.E- Civil Engineering	120
		B.E- Aeronautical Engineering	30
		M.E – Embedded Systems	18
		M.E – CAD / CAM	18
		M.E – Computer Science and Engineering	18
		M.E – Biomedical Engineering	18
		M.E – Power Systems Engineering	18
		M.E – Communications Engineering	18
		M.E – Structural Engineering	18
		M.Tech – Biotechnology	18
		M.Tech – Nano Science and Technology	18
		MCA – Master of Computer Applications	30
		MBA – Master of Business Administration	60
		16.	2020-2021
B.Tech – Bio-Technology	60		
B.E – Electrical and Electronics Engineering	60		
B.E – Electronics and Communication Engineering	60		
B.E – Computer science and Engineering	60		
B.E – Mechanical Engineering	180		
B.E- Civil Engineering	120		
B.E- Aeronautical Engineering	60		
M.E – Embedded Systems	18		
M.E – CAD / CAM	18		
M.E – Computer Science and Engineering	18		
M.E – Biomedical Engineering	18		
M.E – Power Systems Engineering	18		
M.E – Communications Engineering	18		
M.E – Structural Engineering	18		
M.Tech – Biotechnology	18		
M.Tech – Nano Science and Technology	18		
MCA – Master of Computer Applications	60		
MBA – Master of Business Administration	60		
17.	2021-2022	B.E – Biomedical Engineering	60
		B.Tech – Bio-Technology	60
		B.E – Electrical and Electronics Engineering	60
		B.E – Electronics and Communication Engineering	60
		B.E – Computer science and Engineering	60
		B.E – Mechanical Engineering	180
		B.E- Civil Engineering	120
		B.E- Aeronautical Engineering	60

		M.E – Embedded Systems	18
		M.E – CAD / CAM	18
		M.E – Computer Science and Engineering	18
		M.E – Biomedical Engineering	18
		M.E – Power Systems Engineering	18
		M.E – Communications Engineering	18
		M.E – Structural Engineering	18
		M.Tech – Biotechnology	18
		M.Tech – Nano Science and Technology	18
		MCA – Master of Computer Applications	60
		MBA – Master of Business Administration	60
18	2022-2023	B.E - Biomedical Engineering	60
		B.Tech - Biotechnology	60
		B.E - Electrical and Electronics Engineering	60
		B.E - Electronics and Communication Engineering	60
		B.E - Computer Science and Engineering	60
		B.E - Mechanical Engineering	90
		B.E- Civil Engineering	60
		B.E- Aeronautical Engineering	60
		B.E – Artificial Intelligence & Machine Learning	30
		B.E – Cyber Security	30
		B.E – Robotics and Automation	30
		B.Tech – Agricultural Engineering	60
		M.E - Embedded Systems	18
		M.E – CAD / CAM	18
		M.E – Computer Science and Engineering	18
		M.E – Biomedical Engineering	18
		M.E – Power Systems Engineering	18
		M.Tech – Biotechnology	18
		M.Tech – Nano Science and Technology	18
		M.E – Communication Engineering	18
		M.E – Structural Engineering	18
		MCA - Master of Computer Applications	60
MBA - Master of Business Administration	60		
18	2023-2024	B.E - Biomedical Engineering	60
		B.Tech - Biotechnology	60
		B.E - Electrical and Electronics Engineering	60
		B.E - Electronics and Communication Engineering	30
		B.E - Computer Science and Engineering	60
		B.E - Mechanical Engineering	90
		B.E- Civil Engineering	60
		B.E- Aeronautical Engineering	30
		B.E – Artificial Intelligence & Machine Learning)	60
		B.E – Cyber Security	60

	B.E – Robotics and Automation	30
	B.Tech – Agricultural Engineering	60
	M.E - Embedded Systems	18
	M.E – CAD / CAM	18
	M.E – Computer Science and Engineering	18
	M.E – Biomedical Engineering	24
	M.E – Power Systems Engineering	18
	M.Tech – Biotechnology	18
	M.Tech – Nano Science and Technology	12
	M.E – Communication Engineering	12
	M.E – Structural Engineering	24
	MCA - Master of Computer Applications	120
	MBA - Master of Business Administration	120
	Diploma in Civil Engineering	60
	Diploma in Mechanical Engineering	60
	Diploma in Computer Science and Information Technology	60
	Diploma in Electrical and Electronics Engineering	60

• **Number of Students admitted under various categories in the last three years**

Sl.No.	Branch	Actual admissions 2023-2024	Actual admissions 2022-2023	Actual admissions 2021-2022
1.	B.E - Biomedical Engineering	38	39	57
2.	B.Tech - Biotechnology	24	30	14
3.	B.E - Electrical and Electronics Engineering	12	8	55
4.	B.E - Electronics and Communication Engineering	7	7	21
5.	B.E - Computer Science and Engineering	46	43	44
6.	B.E - Mechanical Engineering	20	9	127
7.	B.E- Civil Engineering	7	13	77
8.	B.E- Aeronautical Engineering	4	10	5
9.	B.E – Artificial Intelligence & Machine Learning)	14	6	-
10.	B.E – Cyber Security	5	8	-
11.	B.E – Robotics and Automation	1	2	-
12.	B.Tech – Agricultural Engineering	10	11	-
13.	M.E - Embedded Systems	7	5	10
14.	M.E – CAD / CAM	8	13	18
15.	M.E – Computer Science and Engineering	11	3	7
16.	M.E – Biomedical Engineering	9	17	18
17.	M.E – Power Systems Engineering	8	10	10

18.	M.Tech – Biotechnology	13	14	15
19.	M.Tech – Nano Science and Technology	1	1	8
20.	M.E – Communication Engineering	2	2	4
21.	M.E – Structural Engineering	24	18	17
22.	MCA - Master of Computer Applications	49	41	38
23.	MBA - Master of Business Administration	116	60	52
24.	Diploma in Civil Engineering	9	-	-
25.	Diploma in Mechanical Engineering	13	-	-
26.	Diploma in Computer Science and Information Technology	11	-	-
27.	Diploma in Electrical and Electronics Engineering	5	-	-

- **Number of Applications Received During Last two years for admission under management Quota**

Year	Applications received
2023-2024	726
2022-2023	475

X. ADMISSION PROCEDURE:

As per Tamil Nadu Government Policy

XV. INFORMATION ON INFRASTRUCTURE AND OTHER RESOURCES AVAILABLE

- **Library**

Sl.No	Item	Available(Yes/No)
1.	Drinking Water facility	YES
2.	Electric Supply	YES
3.	Generator (min.25 KVA)	YES
4.	Sewage Disposal	YES
5.	Telephone facility	YES
6.	Vehicle Parking Stand	YES
7.	Website	YES
8.	Barrier free built environment for disable	YES
9.	Saftey Provisions(Fire and Others)	YES
10.	General Insurance for Assets	YES
11.	All Weather Approach road	YES
12.	Notice Boards	YES
13.	Public announcement System	YES
14.	ERP for student-institution,Parent interaction	YES
15.	Transport facilities for staff and students	YES
16.	Bank /extension counter facility / post	NO
17.	CCTV Security	YES
18.	LCD in Class Rooms	YES
19.	Group Insurance for Employee	YES
20.	Group Insurance for Students	YES
21.	Staff Quarters	NO
22.	Rain Water Harvesting Structures	YES

S. No	Course(s)	Number of titles of the books	Number of volumes	Journals	
				National	International
1	B.E - Bio-Medical Engineering	638	2550	6	6
2	B.Tech - Bio-Technology	825	3300	6	6
3	B.E - Electrical and Electronics Engineering	675	3000	6	6
4	B.E - Electronics and Communication Engineering	1425	5700	6	12
5	B.E - Computer science and Engineering	600	2401	6	6
6	B.E - Mechanical Engineering	888	3550	8	10
7	B.E- Civil Engineering	306	1723	6	3
8	B.E- Aeronautical Engineering	200	1200	6	3
9	M.E - Embedded Systems	212	1000	6	4
10	M.E – CAD / CAM	162	900	6	4
11	M.E – Computer Science and Engineering	113	700	2	4
12	M.E – Biomedical Engineering	75	400	3	4
13	M.E – Power Systems Engineering	75	400	6	1
14	M.E – Communications Engineering	45	180	3	1
15	M.E – Structural Engineering	43	266	3	1
16	M.Tech – Biotechnology	175	700	2	5
17	M.Tech – Nano Science and Technology	125	500	4	6
18	Master of Computer Applications	1150	4600	6	6
19	Master of Business Administration	1025	4100	9	15
Total		8757	37170	100	103

• **E-Library facilities** - **Available**

Chairman and Members of Governing Council

Name	Position	Qualification	Present Designation / Occupation	Telephone Numbers	Mobile No.	E-mail id	Address
Dr. ASHOK KUMAR T	Member Secretary	OTHERS-M.D-Others-DOCTOR	PROFESSOR	-	9443130263	ashokkumart263@gmail.com	KUMARAHAM,KOLLAMAVADI - 629801 Kanyakumari
Dr. JOTHI BASU S	Members	M.E.-CAD/CAM	PRINCIPAL	04651 - 239900	9281090009	udayajbonline@gmail.com	UDAYA SCHOOL OF ENGINEERING - 629204 Kanyakumari
Mr. BARATHAN B	Members	M.E.-Structural Engineering	PROFESSOR	-	9442247635	barathan632@gmail.com	NMS KAMARAJ POLYTECHNIC COLLEGE, PAZHAVILAI - 629004 Kanyakumari
Dr. CHRISTOPHER T	Members	Ph.D.-Others-mechanical engineering	PROFESSOR	-	9443998275	978christ275@gmail.com	GOVT. COLLEGE OF ENGG, TIRUNELVELI - 627007 Tirunelveli
Mr. KALYANASUNDARAM S	Members	B.A.-English	BRANCH MANAGER SETC	-	9486067294	kalyana294@gmail.com	SETC, NAGERCOIL - 629001 Kanyakumari
Mr. MANIVANNAN A	Members	Ph.D.-Others-Mechanical Engineering	PROFESSOR	-	9486230632	mani632@gmail.com	ANNA UNIVERSITY - 627007 Tirunelveli
Mr. RAMESH K	Members	M.Tech.-Information Technology	SCIENTIST	-	9442273841	978udayaengineering@gmail.com	ISRO - 627133 Tirunelveli
Dr. ARJUN SINGH ACT	Members	OTHERS-M.B.B.S-Others-DOCTOR	TRUSTEE	-	8903603699	978udayaengineering@gmail.com	RAJAKKAMANGALAM WEST JUNCTION, RAJAKKAMANGALAM POST - 629502 Kanyakumari
Mr. THAYAPARAN C	Vice Chairperson	M.E.-Manufacturing Engineering	CHAIRMAN	-	9443358902	978udayaengineering@gmail.com	19/2, RAJAKKAMANGALAM WEST JUNCTION, RAJAKKAMANGALAM POST - 629502 Kanyakumari
Mr. THIRUNAVUKARASU A	Chairman	OTHERS-IES-Others-ies	GENERAL MANAGER BSNL	-	9443100540	thirunavukarasubsnl@gmail.com	BSNL - NAGERCOIL Kanyakumari

DETAILS OF EXISTING FACULTY MEMBERS

Name of the Course	Sl. No.	Name (s) of the Teaching Faculty	Designation (Lecturer/ Asst. Professor/ Professor)	Qualifications with specialization			Date of Birth	Experience (Years) a) Teaching b) Industry c) Research			Date of Joining the Institution	Gross total salary as on date with scale & Basic pay
				UG	PG	Doctorate		a	b	c		
ECE	1.	Dr.T.Sunitha	Professor	B.E (ECE)	M.E Applied Electronics	-	25-05-1971	15	-	-	20-05-2009	37400+AGP 8700
	2.	Mrs.S.B.Thanga Malar	Assistant Professor	B.E (ECE)	M.E (Applied Electronics)	-	09-01-1984	17	-	-	21-05-2007	15600+AGP 5400
	3.	Mrs. B. R. Uma Devi	Assistant Professor	B.E (ECE)	M.E (Communication System)	-	07-05-1985	16	-	-	03-01-2008	15600+AGP 5400
	4.	Mrs.S.Sindhuja	Assistant Professor	B.E (ECE)	M.E (Applied Electronics)	-	21-06-1993	6	-	-	09-10-2017	15600+AGP 5400
	5.	Mrs.P.M.Dafny Paul	Asst. Prof.	B.E (ECE)	M.E (Applied Electronics)	-	08-03-2000	3	-	-	08-03-2021	15600+AGP 5400
	6.	Ms.M.Priyankagithanjali	Asst. Prof.	B.E (ECE)	M.E (Applied Electronics)	-	25-12-1987	3	-	-	03-02-2021	15600+AGP 5400
	7.	Mrs.L.R.Jonisha Miriam	Asst. Prof.	B.E (ECE)	M.E (Communication Systems)	-	29-12-1991	1	-	-	24-03-2023	15600+AGP 5400
EEE	1.	Dr.A.Sundaramoorthy	Professor	B.E (ECE)	M.E Applied Electronics	-	23-08-1980	4	-	-	01-12-2022	37400+AGP 8700
	2.	Mr. T.Rajesh	Assistant Professor	B.E (EEE)	M.E Power Electronics & Drives	-	23-03-1974	15	-	-	18-08-2008	15600+AGP 5400
	3.	Mrs.R.Shiba	Assistant Professor	B.E (EEE)	M.E (Communication Systems)	-	18-02-1988	11	-	-	30-08-2012	15600+AGP 5400
	4.	Mr.M.Muralish	Assistant Professor	B.E (EEE)	M.E (PED)	-	10-03-1984	5	-	-	03-04-2019	15600+AGP 5400
	5.	Ms.G.Suja	Assistant Professor	B.E (ICE)	M.E (PE&D)	-	12-05-1988	3	-	-	18-01-2021	15600+AGP 5400

	6.	Ms.S.Nivya	Assistant Professor	B.E (EEE)	M.E (Applied Electronics)	-	21-07-1996	1	-	-	02-11-2022	15600+AGP 5400
	7.	Mrs.J.Asha	Assistant Professor	B.E (EEE)	M.E (PED)	-	08-11-1992	2	-	-	15-03-2022	15600+AGP 5400
	8.	Mrs.P.M.Lalley	Assistant Professor	B.E (EEE)	M.E (Embedded System Tech.)	-	14-05-1971	15	-	-	13-09-2022	15600+AGP 5400
	9.	Mr.M.Manikandan	Assistant Professor	B.E (EEE)	M.E Power Electronics & Drives		02-05-2000	0.5	-	-	01-11-2023	15600+AGP 5400
	10.	Mrs.K. Chandra Devi	Assistant Professor	B.E (EEE)	M.E Avionics	-	03-06-1985	0.5	-	-	10-07-2023	15600+AGP 5400
	11.	Mr.T.Antony Thobias	Assistant Professor	B.E (EEE)	M.E Network Engineering	-	31-05-1982	0.5	-	-	27-07-2023	15600+AGP 5400
	12.	Mrs.K.Raji	Assistant Professor	B.E (EEE)	M.E Power Electronics & Drives	-	30-08-1982	2.9	-	-	15-12-2021	15600+AGP 5400
BM	1	Mr.R.Mohan Kumar	Assistant Professor	B.E E&I	M.E Applied Electronics	-	26-04-1983	15	-	-	01-06-2009	15600+ AGP 5400
	2	Ms.H.S.Anuja	Assistant Professor	B.E (BM)	M.E (Applied Electronics)	-	01-05-1989	11	-	-	17-07-2013	15600+AGP 5400
	3	Mrs.S.Sebija	Assistant Professor	B.E (ECE)	M.E (Applied Electronics)	-	17-05-1989	10	-	-	02-01-2014	15600+AGP 5400
	4	Ms.D.Remi	Assistant Professor	B.E (BM)	M.E (BM)	-	16-02-1990	8	-	-	15-12-2016	15600+AGP 5400
	5	Ms.Lincy S L Monisha	Assistant Professor	B.E (ECE)	M.E (Medical Electronics)	-	25-01-1992	7	-	-	03-07-2017	15600+AGP 5400
	6	Mrs.R.Mini Mercy	Assistant Professor	B.E (BM)	M.E (BM)	-	18-04-1996	0.2	-	-	01-02-2024	15600+AGP 5400
	7	Mrs.N.K.Reshma	Assistant Professor	B.E (BM)	M.E (BM)	-	15-06-1998	0.2	-	-	01-02-2024	15600+AGP 5400
	8	Mrs.F.Hebsy Metchado	Assistant Professor	B.E (BM)	M.E (BM)	-	27-05-1993	0.2	-	-	01-02-2024	15600+AGP 5400

	9	Mrs. Drisya Suresh	Assistant Professor	B.E (BM)	M.E (BM)	-	26-04-1983	0.2	-	-	01-02-2024	15600+AGP 5400
BT	1	Dr.L.R.Monisha Miriam	Professor	B.Tech Bio-Tech	M.Tech Bio-Tech	Ph.D	14-08-1986	16	-	-	21-05-2007	37400+AGP 8700
	2	Ms.D.Devina Merin	Assistant Professor	B.Tech (Biotechnology)	M.Tech (Biotechnology)	-	10-04-1984	14	-	-	01-07-2010	15600+AGP 5400
	3	Ms.J.Sherly	Assistant Professor	B.Tech (Biotechnology)	M.Tech (Biotechnology)	-	11-07-1992	9	-	-	03-08-2015	15600+AGP 5400
	4	Ms.G.R.Meera	Assistant Professor	B.Tech (Biotechnology)	M.Tech (Biotechnology)	-	05-05-1990	7	-	-	06-09-2017	15600+AGP 5400
	5	Mr.S.Sujin David Rajan	Assistant Professor	B.Tech (Biotechnology)	M.Tech (Biotechnology)	-	29-05-1994	7	-	-	06-09-2017	15600+AGP 5400
	6	Mr.M.Mari Vignesh	Assistant Professor	B.Tech (Biotechnology)	M.Tech (Biotechnology)	-	05-04-1993	7	-	-	06-09-2017	15600+AGP 5400
	7	Ms.J.Jeslin	Assistant Professor	B.Tech (Biotechnology)	M.Tech (Biotechnology)	-	15-11-1994	6	-	-	08-02-2018	15600+AGP 5400
	8	Mrs.P.Arsula Rose	Assistant Professor	B.Sc (Biotechnology)	M.Tech (NST)	-	10-06-1979	7	-	-	06-09-2017	15600+AGP 5400
	9	Mr.K.Prakash Shyam	Assistant Professor	B.Sc (Biotechnology)	M.Sc, M.Tech (Biotechnology)	-	17-08-1986	1	-	-	03-05-2023	15600+AGP 5400
CSE	1	Ms.S.Jamelia	Associate Professor	B.E (CSE)	M.Tech (CSE)	-	26-07-1978	16	-	-	09-06-2008	15600+AGP 5400
	2	Ms.C.Brintha	Assistant Professor	B.Tech (IT)	M.E (CSE)	-	08-03-1986	15	-	-	01-07-2009	15600+AGP 5400
	3	Mr.M.B.Jerrysmith	Assistant Professor	B.E (CSE)	M.Tech (C & IT)	-	09-06-1986	13	-	-	01-06-2011	15600+AGP 5400
	4	Ms.T.Escalin Freetha	Assistant Professor	B.E (CSE)	M.Tech (C & IT)	-	28-03-1985	13	-	-	01-06-2011	15600+AGP 5400
	5	Mrs.S.V.Sajeela	Assistant Professor	B.E (CSE)	M.E (CSE)	-	25-05-1987	3	-	-	04-07-2022	15600+AGP 5400
	6	Mr.J.Jegan Gladly Prince	Assistant Professor	B.E (CSE)	M.E (CSE)	-	12-02-1989	1	-	-	27-03-2023	15600+AGP 5400

	7	Mr.S.R.Sujin Raja	Assistant Professor	B.E (CSE)	M.E (CSE)	-	09-07-1987	1	-	-	03-01-2023	15600+AGP 5400
	8	Mrs.J.Sails Cablin	Assistant Professor	B.Tech (IT)	M.Tech (IT)	-	01-06-1985	5	-	-	27-03-2023	15600+AGP 5400
	9	Mrs.S.Palani Thangam	Assistant Professor	B.E (CSE)	M.Tech (IT)	-	27-10-1980	1	-	-	05-02-2024	15600+AGP 5400
CSE (CS)	1	Ms.R.JAnishlin	Assistant Professor	M.Sc (CS)	M.E (CSE)	-	23-12-1988	9	-	-	03-08-2015	15600+AGP 5400
	2	Mrs.E.Auslin Vini	Assistant Professor	B.E (CSE)	M.E (CSE)	-	28-07-1988	1	-	-	02-05-2023	15600+AGP 5400
	3	Ms.M.K.Aarathy Thambi	Assistant Professor	B.E (CSE)	M.E (CSE)	-	30-05-1996	1	-	-	04-05-2022	15600+AGP 5400
	4	Mr.D.S.Godson Sweety	Assistant Professor	B.E (CSE)	M.E (CSE)	-	16-02-1989	1	-	-	25-09-2023	15600+AGP 5400
	5	Mrs.K.M.Mehilin	Assistant Professor	B.E (CSE)	M.E (CSE)	-	20-05-1985	1	-	-	25-09-2023	15600+AGP 5400
	6	Mrs.J.Ebenezer	Assistant Professor	B.E (CSE)	M.E (CSE)	-	14-08-1985	1	-	-	06-05-2023	15600+AGP 5400
CSE (AI)	1	Mr.N.Arun Venkadesh	Assistant Professor	B.E (CS)	M.E (Software Engineering)	-	08-05-1984	13	-	-	10-10-2022	15600+AGP 5400
	2	Dr.M.Mathi Murugan	Associate Professor	MCA	M.Tech(IT)	Ph.D	21-05-1980	15	-	-	17-05-2018	15600+AGP 5400
	3	Mrs.N.S.Baviya	Assistant Professor	B.E (CSE)	M.E (EST)	-	04-06-1993	2	-	-	10-08-2022	15600+AGP 5400
	4	Mrs.M.P.Srithi	Assistant Professor	B.E (CSE)	M.E (CSE)	-	16-05-1997	2	-	-	29-08-2022	15600+AGP 5400
Mechanical	1	Dr.A.Florence	Assistant Professor	B.E (Mechanical)	M.E (CAD/CAM)	Ph.D	04-06-1979	2	-	-	02-02-2022	15600+AGP 5400
	2	Mr.S.Sunish Kumar	Associate Professor	B.E (Mechanical)	M.E (Mfg. Engg)	-	28-03-1972	11	-	-	03-08-2015	15600+AGP 5400
	3	Mr.G.Michael Jose	Assistant Professor	B.E (Mechanical)	M.E (CAD/CAM)	-	03-07-1987	11	-	-	01-07-2013	15600+AGP 5400
	4	Mr. S.Saravanan	Assistant Professor	B.E (Mechanical)	M.E (CAD/CAM)	-	05-07-1985	11	-	-	01-06-2013	15600+AGP 5400
	5	Mr.K.Murugan	Assistant Professor	B.E (Mechanical)	M.E (CAD/CAM)	-	26-05-1976	11	-	-	07-05-2013	15600+AGP 5400

	6	Mr. P. Satheesh	Assistant Professor	B.E (Mechanical)	M.E (CAD/CAM)	-	5-06-1988	11	-	-	07-05-2013	15600+AGP 5400
	7	Mr.T.Selvaraj	Assistant Professor	B.E (Mechanical)	M.E (CAD/CAM)	-	03-06-1980	11	-	-	07-05-2013	15600+AGP 5400
	8	Mr.D.Enigo Bessi	Assistant Professor	B.E (Mechanical)	M.E (Energy Engg)	-	05-04-1986	9	-	-	03-07-2015	15600+AGP 5400
	9	Mr.Vibin Jose.M	Assistant Professor	B.E (Mechanical)	M.E (CAD/CAM)	-	18-05-1994	7	-	-	09-10-2017	15600+AGP 5400
	10	Mr.Sudan.V	Assistant Professor	B.E (Mechanical)	M.E (CAD/CAM)	-	31-01-1994	7	-	-	09-10-2017	15600+AGP 5400
	11	Mr.K.V.Subash	Assistant Professor	B.E (Mechanical)	M.E (CAD/CAM)	-	05-05-1974	8	-	-	01-03-2016	15600+AGP 5400
	12	Mr.D.N.Aswin Manoj	Assistant Professor	B.E (Mechanical)	M.E (CAD/CAM)	-	09-04-1990	2	-	-	04-07-2022	15600+AGP 5400
	13	Mr.M.C.Clinton	Assistant Professor	B.E (Mechanical)	M.E (CAD/CAM)	-	22-02-1993	2	-	-	04-07-2022	15600+AGP 5400
	14	Mr.S.Abhijith	Assistant Professor	B.E (Mechanical)	M.E (CAD/CAM)	-	26-05-1994	2	-	-	04-07-2022	15600+AGP 5400
	15	Mr.S.Anand	Assistant Professor	B.E (Mechanical)	M.E (Energy Engineering)	-	22-05-1991	1	-	-	02-02-2023	15600+AGP 5400
Robotics	1	Mr.C.Dhinesh Kumar	Assistant Professor	B.E (Mechanical)	M.E (CAD/CAM)	-	03-05-1987	11	-	-	01-07-2013	15600+AGP 5400
	2	Mr.R.John Herald	Assistant Professor	B.E (Mechanical)	M.E (CAD/CAM)	-	24-05-1985	8	-	-	06-01-2016	15600+AGP 5400
	3	Mr.K.Augustin Raj	Assistant Professor	B.E (Mechanical)	M.E (CAD/CAM)	-	22-04-1995	2	-	-	04-07-2022	15600+AGP 5400
	4	Mr.T.Velrajan	Assistant Professor	B.E (Mechanical)	M.E (CAD/CAM)	-	05-07-1984	8	-	-	04-07-2022	15600+AGP 5400
Aero	1	Mr.R.K.Nivendran	Assistant Professor	B.E (Aeronautical)	M.E (CAD/CAM)	-	05-06-1990	10	-	-	07-05-2014	15600+AGP 5400
	2	Mr.G.Satheesh Kumar	Assistant Professor	B.E (Aeronautical)	M.E (CAD/CAM)	-	15-06-1987	10	-	-	07-05-2014	15600+AGP 5400
	3	Mr.C.Sathiaseelan	Assistant Professor	B.E (Mechanical)	M.E (Production Engineering)	-	08-11-1970	9	-	-	03-08-2015	15600+AGP 5400
	4	Mr.R.C.Ratheesh Sekhar	Assistant Professor	B.E (Aeronautical)	M.E (Aeronautical)	-	29-03-1990	9	-	-	02-03-2015	15600+AGP 5400

	5	Mr.R.Ramesh	Assistant Professor	B.E (Aeronautical)	M.E (CAD/CAM)	-	04-04-1991	10	-	-	31-12-2014	15600+AGP 5400
	6	Mr.B.Gnana Blessing	Assistant Professor	B.E (Aeronautical)	M.E (CAD/CAM)	-	20-11-1995	1	-	-	02-02-2023	15600+AGP 5400
	7	Mrs. M.Christina Rani Sindhuja	Assistant Professor	B.E (Mechanical)	M.E (Thermal Engg.)	-	12-06-1998	1	-	-	03-04-2023	15600+AGP 5400
	8	Mr.J.Anish	Assistant Professor	B.E (Mechanical)	M.E (Thermal Engg.)	-	16-03-1996	1	-	-	01-02-2024	15600+AGP 5400
Civil	1	Mr.Allen Wills	Assistant Professor	M.Sc (Physics)	M.Tech (Remote Sensing)	-	12-12-1984	10	-	-	01-04-2016	15600+AGP 5400
	2	Mr. J.Judulius	Assistant Professor	B.E (Civil)	M.E (Structural Engg.)	-	04-12-1992	7	-	-	09-10-2017	15600+AGP 5400
	3	Mr.D.Abishek Harries	Assistant Professor	B.E (Civil)	M.E (Structural Engg.)	-	03-09-1990	6	-	-	04-07-2018	15600+AGP 5400
	4	Mr.V.Sunil Daniel	Assistant Professor	B.E (Civil)	M.E (Structural Engg.)	-	03-09-1990	6	-	-	04-07-2018	15600+AGP 5400
	5	Mrs.B.Thanga Geetha	Assistant Professor	B.E (Civil)	M.E (Structural Engg.)	-	05-05-1992	6	-	-	04-07-2018	15600+AGP 5400
	6	Mr.K.Sunil Prakash	Assistant Professor	B.E (Civil)	M.E (Structural Engg.)	-	24-04-1996	3	-	-	04-01-2021	15600+AGP 5400
	7	Mrs.C.V.Jenisha	Assistant Professor	B.E (Civil)	M.E (Structural Engg.)	-	31-07-1992	3	-	-	03-09-2021	15600+AGP 5400
	8	Mr.M.Manisekar	Assistant Professor	B.E (Civil)	M.E (Structural Engg.)	-	20-05-1985	3	-	-	03-09-2021	15600+AGP 5400
	9	Mr.D.Abinesh Livin	Assistant Professor	B.E (Civil)	M.E (Structural Engg.)	-	26-06-1996	3	-	-	03-09-2021	15600+AGP 5400
	10	Ms.G.P.Ancy Mol	Assistant Professor	B.E (Civil)	M.E (Structural Engg.)	-	19-01-1995	2	-	-	03-01-2022	15600+AGP 5400
	11	Mr.S.Anto Prabin Benil	Assistant Professor	B.E (Civil)	M.E (Structural Engg.)	-	22-08-1986	2	-	-	04-07-2022	15600+AGP 5400
	12	Ms.S.R.Benifha Sherin	Assistant Professor	B.E (Civil)	M.E (Structural Engg.)	-	15-03-2000	1	-	-	31-07-2023	15600+AGP 5400
Agricultural Engg.	1	Mrs.Sum Bell Sutha	Assistant Professor	B.E (Civil)	M.E (Structural Engg.)	-	31-07-1980	10	-	-	02-07-2014	15600+AGP 5400
	2	Ms.V.R.Kala	Assistant Professor	B.E (Civil)	M.E (Structural Engg.)	-	17-05-1992	8	-	-	04-07-2016	15600+AGP 5400

	3	Mr.K.Anish	Assistant Professor	B.E (Civil)	M.E (Structural Engg.)	-	03-05-1996	2	-	-	03-01-2022	15600+AGP 5400
	4	Mr.R.Karthick Raja	Assistant Professor	B.E (Civil)	M.E (Structural Engg.)	-	05-06-1992	2	-	-	04-07-2022	15600+AGP 5400
	5	Ms.R.Atchaya	Assistant Professor	B.E (Civil)	M.E (Structural Engg.)	-	29-12-1998	1	-	-	01-02-2023	15600+AGP 5400
Sciences & Humanities	1.	Dr.T.Mary Jeeva	Professor	B.Sc (Physics)	M.Sc (Physics)	M.Phil Ph.D	04-03-1974	23	-	-	25-09-2018	37400+AGP 8700
	2.	Ms.R.Adlin Reni	Assistant Professor	B.Sc (Physics)	M.Sc (Physics)	M.Phil	04-06-97	2	-	-	05-06-2023	15600+AGP 5400
	3.	Ms.P.Abisha	Assistant Professor	B.Sc (Physics)	M.Sc (Physics)	M.Phil	20-05-1996	5	-	-	17-06-2019	15600+AGP 5400
	4.	Mrs.H.Subha	Assistant Professor	B.Sc (Maths)	M.Sc (Maths)	M.Ed	01-06-1982	11	-	-	02-09-2013	15600+AGP 5400
	5.	Mr.T.Gopu	Assistant Professor	B.Sc (Maths)	M.Sc (Maths)	-	27-06-1969	9	-	-	21-07-2015	15600+AGP 5400
	6.	Mrs. A.K.Kohila	Assistant Professor	B.Sc (Maths)	M.Sc (Maths)	M.Phil	20-07-1990	9	-	-	03-08-2015	15600+AGP 5400
	7.	Ms.D.Jeen Rexlin	Assistant Professor	B.Sc (Maths)	M.Sc (Maths)	M.Phil	27-04-1993	6	-	-	09-07-2018	15600+AGP 5400
	8.	Mrs.M.Chithra	Assistant Professor	B.Sc (Maths)	M.Sc (Maths)	M.Phil	14-05-1985	6	-	-	01-06-2018	15600+AGP 5400
	9.	Mrs.S.P.Santhy	Assistant Professor	B.Sc (Maths)	M.Sc (Maths)	M.Phil	31-07-1970	5	-	-	01-07-2019	15600+AGP 5400
	10.	Ms.C.Vijila	Assistant Professor	B.Sc (Maths)	M.Sc (Maths)	M.Phil	03-06-1997	3	-	-	13-09-2021	15600+AGP 5400
	11.	Mrs.J.Riji	Assistant Professor	B.Sc (Maths)	M.Sc (Maths)	M.Phil	28-09-1985	2	-	-	01-02-2022	15600+AGP 5400
	12.	Ms.T.Nisha	Assistant Professor	B.Sc (Maths)	M.Sc (Maths)	M.Phil	27-10-1998	2	-	-	01-02-2022	15600+AGP 5400
	13.	Mrs.G.Uma	Assistant Professor	B.Sc (Maths)	M.Sc (Maths)	M.Phil	24-04-1994	5	-	-	03-10-2018	15600+AGP 5400
	14.	Mrs.C.Jashwini Janet	Assistant Professor	B.Sc (Maths)	M.Sc (Maths)	M.Phil	12-11-1998	1	-	-	23-11-2022	15600+AGP 5400
	15.	Dr.S.Ginil Mon	Professor	B.Sc (Chemistry)	M.Sc (Chemistry)	Ph.D	14-05-1983	1	-	-	09-05-2022	37400+AGP 8700

	16.	Mr.K.Srikrishna Ramesh	Assistant Professor	B.Sc (Chemistry)	M.Sc (Chemistry)	M.Phil	25-07-1984	15	-	-	21-01-2009	15600+AGP 5400
	17.	Mrs.J.Nirmala	Assistant Professor	B.Sc (Chemistry)	M.Sc (Chemistry)	M.Phil	06-04-1979	11	-	-	02-09-2013	15600+AGP 5400
	18.	Ms.A.Jessy	Assistant Professor	B.Sc (Chemistry)	M.Sc (Chemistry)	M.Phil	29-06-1993	6	-	-	20-07-2018	15600+AGP 5400
	19.	Mrs.K.Nithya Kumari	Assistant Professor	B.Sc (Chemistry)	M.Sc (Chemistry)	M.Phil	15-05-1993	5	-	-	02-12-2019	15600+AGP 5400
	20.	Mrs.P.Mary Ancy	Assistant Professor	B.Sc (Chemistry)	M.Sc (Chemistry)	M.Phil	10-03-1989	6	-	-	08-01-2018	15600+AGP 5400
	21.	Ms.M.Nandini	Assistant Professor	B.Sc (Chemistry)	M.Sc (Chemistry)	M.Phil	10-06-1993	2	-	-	02-02-2023	15600+AGP 5400
	22.	Ms.Maryarockia Salooja.B	Assistant Professor	B.A (English)	M.A (English)	M.Phil	08-01-1986	9	-	-	03-08-2015	15600+AGP 5400
	23.	Mr.K.Jenish	Assistant Professor	B.A (English)	M.A (English)	M.Phil	01-06-1995	6	-	-	20-07-2018	15600+AGP 5400
	24.	Mr.A.Daniel Mervyn	Assistant Professor	B.A (English)	M.A (English)	M.Phil	01-02-1964	5	-	-	01-08-2019	15600+AGP 5400
	25.	Mr.A.Vaikundamani	Assistant Professor	B.A (English)	M.A (English)	M.Phil	20-04-1988	5	-	-	02-12-2019	15600+AGP 5400
	26.	Ms.K.Shiny	Assistant Professor	B.A (English)	M.A (English)	M.Phil	13-06-1994	5	-	-	02-12-2019	15600+AGP 5400
	27.	Mr.T.Stephen	Assistant Professor	B.A (English)	M.A (English)	M.Phil	23-07-1985	5	-	-	02-12-2019	15600+AGP 5400
	28.	Ms.S.Asathy	Assistant Professor	B.A (English)	M.A (English)	M.Phil	20-05-1990	5	-	-	02-12-2019	15600+AGP 5400
	29.	Mrs.J.Jeslin Sheriba Nevis	Assistant Professor	B.A (English)	M.A (English)	M.Phil	31-07-1989	2	-	-	04-07-2022	15600+AGP 5400
	30.	Mrs.C.Bala Sangeetha	Assistant Professor	B.A (Tamil)	M.A (Tamil)	M.Phil	07-06-1984	2	-	-	08-01-2018	15600+AGP 5400
	31.	Ms.J.Abitha	Assistant Professor	B.E (ECE)	M.E (EST)	-	29-04-1991	5	-	-	09-10-2017	15600+AGP 5400
	32.	Mrs.B.Rajalakshmi	Assistant Professor	B.E (CSE)	M.E (CSE)	-	27-11-1987	2	-	-	04-07-2022	15600+AGP 5400
M.E Embedded systems	1	Mr.K.E.Sajeev Jeba King	Assistant Professor	B.E (EEE)	M.E (Applied Electronics)	-	30-09-1981	16	-	-	21-05-2007	15600+AGP 5400

	2	Mr.N.G.Jerry Britto	Assistant Professor	B.E (ECE)	M.E (Communication Systems)	-	20-12-1991	5	-	-	08-04-2019	15600+AGP 5400
	3	Mr.S.Hari	Assistant Professor	B.E (ECE)	M.E (EST)	-	05-06-1994	3	-	-	04-01-2021	15600+AGP 5400
	4	Mr.K.Arun	Assistant Professor	B.E (ECE)	M.E (Applied Electronics)	-	04-07-1989	3	-	-	01-02-2021	15600+AGP 5400
M.E Communication Engineering	1	Dr.K.Vijila Rani	Professor	B.E (ECE)	M.E (Digital Electronics)	Ph.D	10-06-1994	4	-	-	01-08-2020	37400+AGP 8700
	2	Ms.J.V.Thirupthika	Assistant Professor	B.E (ECE)	M.E (Applied Electronics)	-	07-10-1994	7	-	-	01-09-2017	15600+ AGP 5400
	3	Mr.L.Karthick Vijaya Raja	Assistant Professor	B.E (ECE)	M.E (Control and Instrumentation Engineering)	-	21-01-1986	11	-	-	06-02-2013	15600+ AGP 5400
M.E Power System Engineering	1	Ms.P.Sreeja	Assistant Professor	B.E (EEE)	M.E (PSE)	-	13-07-1997	4	-	-	01-09-2020	15600+AGP 5400
	2	Ms.A.G.Rathiga	Assistant Professor	B.E (EEE)	M.E (PSE)	-	23-08-1988	1	-	-	02-02-2023	15600+AGP 5400
	3	Mrs.R.Binisha	Assistant Professor	B.E (EEE)	M.E (Software Engineering)	-	30-11-1986	11.5	-	-	03-04-2023	15600+AGP 5400
	4	Mrs.M.Benitta Mary	Assistant Professor	B.E (EEE)	M.E (Power Electronics and Drives)	-	29-04-1992	0.6	-	-	04-10-2023	15600+AGP 5400
M.E Biomedical Engineering	1	Ms.T.Merlin Leo	Assistant Professor	B.E (ECE)	M.E (Communication Systems)	-	27-03-1975	20	-	-	20-11-2018	15600+AGP 5400
	2	Mr.Amith Rajkumar.R	Assistant Professor	B.Tech (BM)	M.Tech (NST)	-	22-04-1985	7	-	-	25-08-2016	15600+AGP 5400
	3	Ms.T.Jilly Arasu	Assistant Professor	B.E (BM)	M.E (Bio Medical Instrumentation)	-	09-04-1989	6	-	-	09-10-2017	15600+AGP 5400
M.E Structural Engineering	1	Mrs.D.Sheeba	Assistant Professor	B.E (Civil)	M.E (Structural Engg.)	-	17-05-1987	9	-	-	02-07-2014	15600+AGP 5400
	2	Mrs.P.M.Lovely	Assistant Professor	B.E (Civil)	M.E (Structural Engg.)	-	03-06-1981	4	-	-	01-02-2019	15600+AGP 5400

	3	Ms.T.R.Divya	Assistant Professor	B.E (Civil)	M.E (Structural Engg.)	-	12-12-1997	1	-	-	03-01-2022	15600+AGP 5400
M.Tech Biotech	1	Dr.L.P.Merlin Rajesh Lal	Professor	B.Tech (BT)	M.Tech (BT)	Ph.D (BT)	05-11-1984	12	-	-	02-08-2017	37400+AGP 8700
	2	Mrs.B.S.Dhanya	Assistant Professor	B.Sc (Biochemistry)	M.Sc (Biochemistry)	M.Tech (BT)	21-08-1987	5	-	-	08-02-2018	15600+AGP 5400
	3	Mrs.M.Baby Jenitta	Assistant Professor	B.Tech (BT)	M.Tech (BT)	-	03-03-1992	3	-	-	03-02-2020	15600+AGP 5400
M.Tech Nano Science and Technology	1	Dr .Madonna Shalma	Assistant Professor	B.Tech (BT)	M.Tech (BT)	Ph,D	03-03-1990	8	-	-	09-10-2017	15600+AGP 5400
	2	Ms.A.Anusha	Assistant Professor	B.Tech (BT)	M.Tech (BT)		24-01-1995	5	-	-	04-07-2018	15600+AGP 5400
M.E Computer Science and Engineering	1	Ms.T.Mary Daphne	Associate Professor	B.E (CSE)	M.E (CSE)	-	21-02-1981	17	-	-	01-02-2006	15600+AGP 5400
	2	Mrs.D.K.Kalaivani	Associate Professor	B.E (EEE)	M.E (CSE)	-	12-02-1980	14	-	-	01-06-2009	15600+AGP 5400
	3	Mr.J.Jerin	Associate Professor	B.E (EEE)	M.E (CSE)	-	20-09-1991	2	-	-	24-01-2022	15600+AGP 5400
M.E CAD / CAM	1	Mr.S.Jothi Basu	Associate Professor	B.E (Mech.)	M.E (CAD/CAM)	-	10-05-1981	17	-	-	03-08-2015	15600+AGP 5400
	2	Mr.N.Mohana Sundaram	Associate Professor	B.E (Mechanical)	M.E (CAD/CAM)	-	05-06-1970	17	-	-	02-07-2014	15600+AGP 5400
	3	Mr.S.Sreejan	Assistant Professor	B.E (Mechanical)	M.E (Manufacturing Engineering)	-	31-05-1985	10	-	-	16-07-2013	15600+AGP 5400
M.C.A	1.	Dr.V.Resmi	Professor	B.Sc Physics	M.C.A Computer Application	Ph.D	16-04-1975	22	-	-	03-09-2018	37400+AGP 8700
	2.	Mr.T.Vijayakumar	Assistant Professor	B.A (History)	M.C.A Computer Application	-	07-06-1977	9	-	-	15-05-2023	15600+AGP 5400
	3.	Mr. L. Panneer Dhas	Assistant Professor	B.Sc (CS)	M.Sc (CS)	M.Tech (IT)	21-07-1977	15	-	-	01-07-2017	15600+AGP 5400
	4.	Mr.C.S.Sunil Kumar	Assistant Professor	B.Sc Physics	M.C.A Computer Application	-	27-11-1981	14	-	-	05-08-2009	15600+AGP 5400
	5.	Mrs.G.Geetha	Assistant Professor	B.Sc Maths	M.C.A Computer Application	-	22-05-1984	13	-	-	15-07-2010	15600+AGP 5400
	6.	Mr.L.Rajalingam	Assistant Professor	BCA Computer Application	M.C.A Computer Application	-	20-04-1978	14	-	-	10-04-2015	15600+AGP 5400

	7.	Mrs.P.Priya	Assistant Professor	B.C.A Computer Application	M.C.A Computer Application	M.E (SE)	01-03-1977	9	-	-	01-07-2014	15600+AGP 5400
	8.	Mr.J.Krishna Kumar	Assistant Professor	B.Sc (CS)	M.C.A Computer Application	-	02-09-1982	5	-	-	02-07-2018	15600+AGP 5400
	9.	Mrs.M.G.Manjusha	Assistant Professor	B.Sc (CS)	M.C.A Computer Application	M.E (CSE)	19-12-1997	0.5	-	-	01-12-2023	15600+AGP 5400
	10.	Mrs.A.Mary Rema Sree	Assistant Professor	B.Sc (CS)	M.C.A Computer Application	-	06-01-1980	0.5	-	-	01-12-2023	15600+AGP 5400
	11.	Mrs.V.Sree Vidhya	Assistant Professor	B.Sc (Maths)	M.C.A Computer Application	-	14-05-1985	0.5	-	-	01-12-2023	15600+AGP 5400
	12.	Mr.C.V.Shyju	Assistant Professor	B.Sc (CS)	M.C.A Computer Application	-	18-08-1987	0.5	-	-	01-12-2023	15600+AGP 5400
M.B.A	1.	Mr.K.Venkadesh	Assistant Professor	B.A (Sociology)	M.B.A Finance & Marketing	-	10-05-1982	16	-	-	02-07-2007	15600+AGP 5400
	2.	Mr.Kannan.S	Assistant Professor	B.A (History)	M.B.A Human resources & Marketing	-	27-05-1988	12	-	-	29-01-2011	15600+AGP 5400
	3.	Ms.S.Monisha	Assistant Professor	B.Tech (IT)	M.B.A	-	4-06-1993	6	-	-	19-10-2017	15600+AGP 5400
	4.	Ms.T.V.Mamtha	Assistant Professor	B.Tech (IT)	M.B.A	-	31-10-1996	2	-	-	04-01-2021	15600+AGP 5400
	5.	Mrs.D.Sterlin Jeniba	Assistant Professor	B.Sc (CS)	M.B.A	-	17-12-1998	1	-	-	20-09-2022	15600+AGP 5400
	6.	Mrs.R.Bindhu	Assistant Professor	B.Sc (CS)	M.B.A	-	12-07-1996	0.5	-	-	24-07-2023	15600+AGP 5400
	7.	Mr.T.Abhishek	Assistant Professor	B.E (Mechanical)	M.B.A	-	18-06-1996	0.5	-	-	01-12-2023	15600+AGP 5400
	8.	Mr.K.Harish	Assistant Professor	B.E (Mechanical)	M.B.A	-	08-05-1996	0.5	-	-	01-12-2023	15600+AGP 5400
	9.	Ms.I.Jabarani	Assistant Professor	B.B.A	M.B.A	-	17-11-1997	0.5	-	-	01-12-2023	15600+AGP 5400
	10.	Mrs.R.Geetha	Assistant Professor	B.A	M.B.A	-	17-11-1997	0.5	-	-	01-12-2023	15600+AGP 5400
	11.	Mr.R.Radhakrishnan	Assistant Professor	B.A	M.B.A	-	09-07-1982	0.5	-	-	13-03-2024	15600+AGP 5400